

As of Wednesday, April 6, 2016, the ORC ECA 6 and ECA Root CA 4 certificates must be imported into your web browser to gain access to the iSAN or SANWeb.

Below you will find a website where the certificates can be downloaded/opened and imported..

You may already have these certificates installed, if this is the case there is no need to install them again. Follow directions under Step 24 to check for certificates.

Process:

1. Go to the External Certificate Authority (ECA) website to find certificates
2. Download/open and import the ECA Root CA 4 Certificate
3. Download/open and import the ORC ECA 6 Certificate
4. Check to see if the certificates were installed

Go to the External Certificate Authority (ECA) website

1. Go to: <https://eca.orc.com/eca-repository/>

Download/open and import the ECA Root CA 4 Certificate

2. Select the **ECA Root CA 4 Certificate** link; see Figure 1
3. Select **Open**; see Figure 1



Figure 1

4. Select the **Install Certificate** button; see Figure 2
5. Select **Next**; see Figure 2

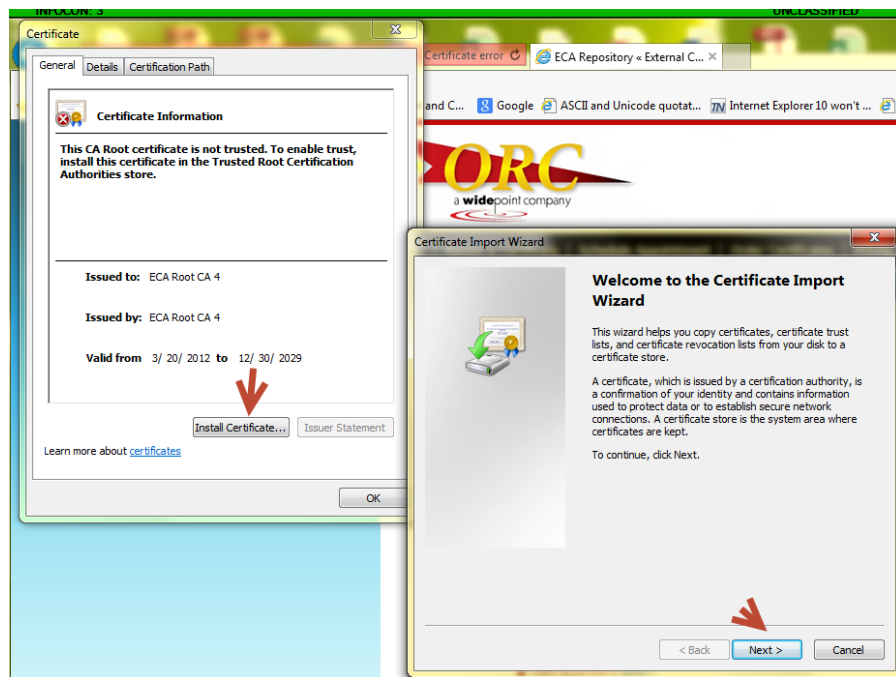


Figure 2

6. You will be taken to a Certificate Store window.
- Mark the **Place all certificates in the following store** radio button; see Figure 3
7. The Certificate store text box should say *"Trusted Root Certification Authorities"*, select the **Browse** button; see Figure 3.
8. Scroll down and select **"Trusted Root Certification Authorities"**, then the **OK** button; see Figure 3.
9. Select **Next**; see Figure 3.

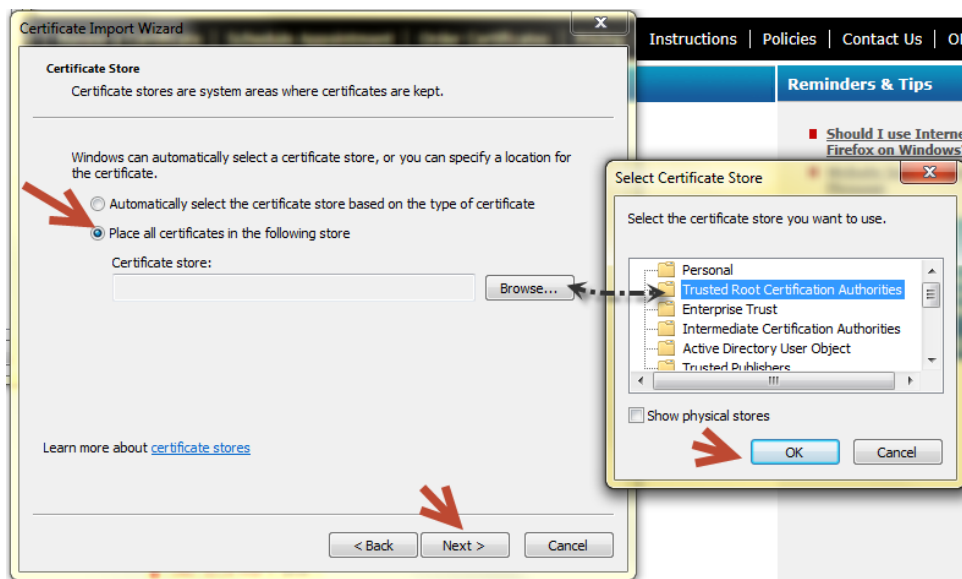


Figure 3

10. Select the **Finish** button; see Figure 4.

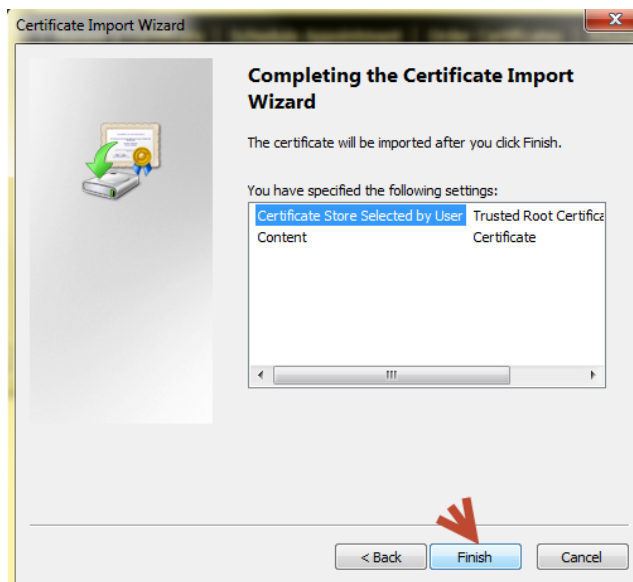


Figure 4

11. If asked "Do you want to install this certificate?", select the **Yes** button; see Figure 5.

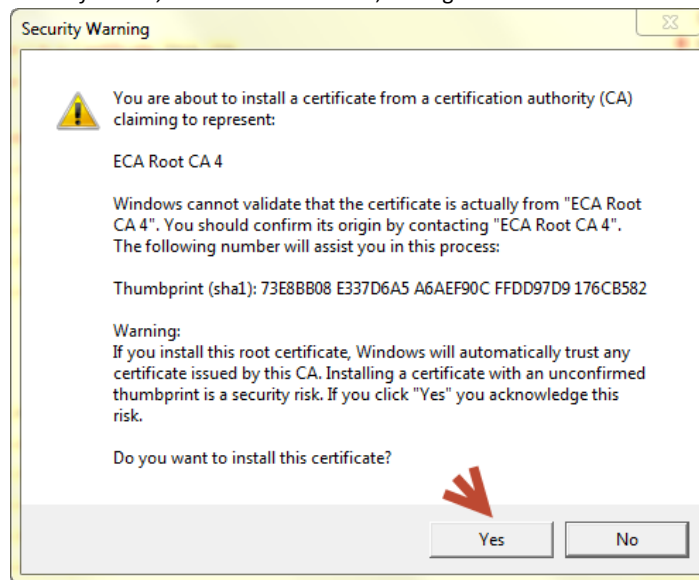


Figure 5

12. Select the **OK** button

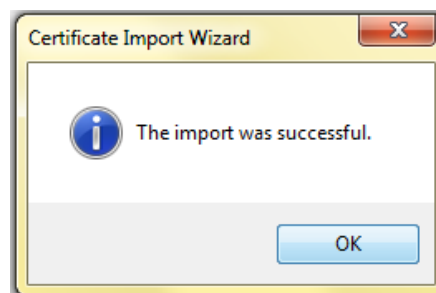


Figure 6

Download/open and import the ORC ECA 6 Certificate

13. Select the **ORC ECA 6** certificate link; see Figure 7
14. Select **Open**; see Figure 7



Figure 7

15. Select the **Install Certificate** button; see Figure 8
16. Select **Next**; see Figure 8

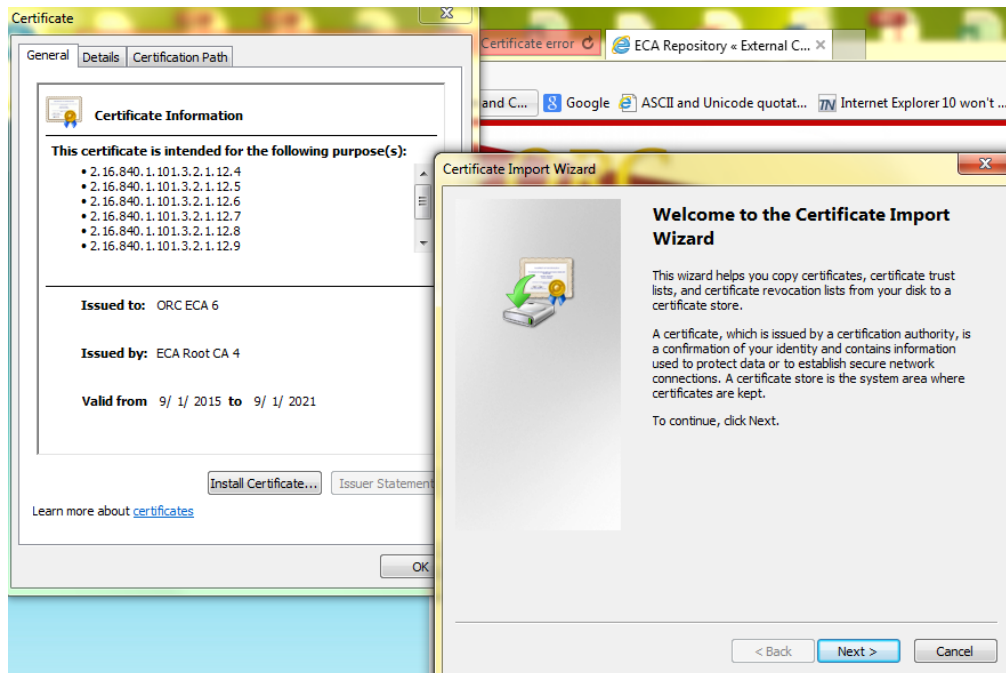


Figure 8

17. You will be taken to a *Certificate Store* window.
Mark the **Place all certificates in the following store** radio button; see Figure 9
18. The Certificate store text box should say *Intermediate Certification Authorities*, select the **Browse** button; see Figure 9.
19. Scroll down and select **Intermediate Certification Authorities**, then the **OK** button; see Figure 9.
20. Select **Next**; see Figure 9.

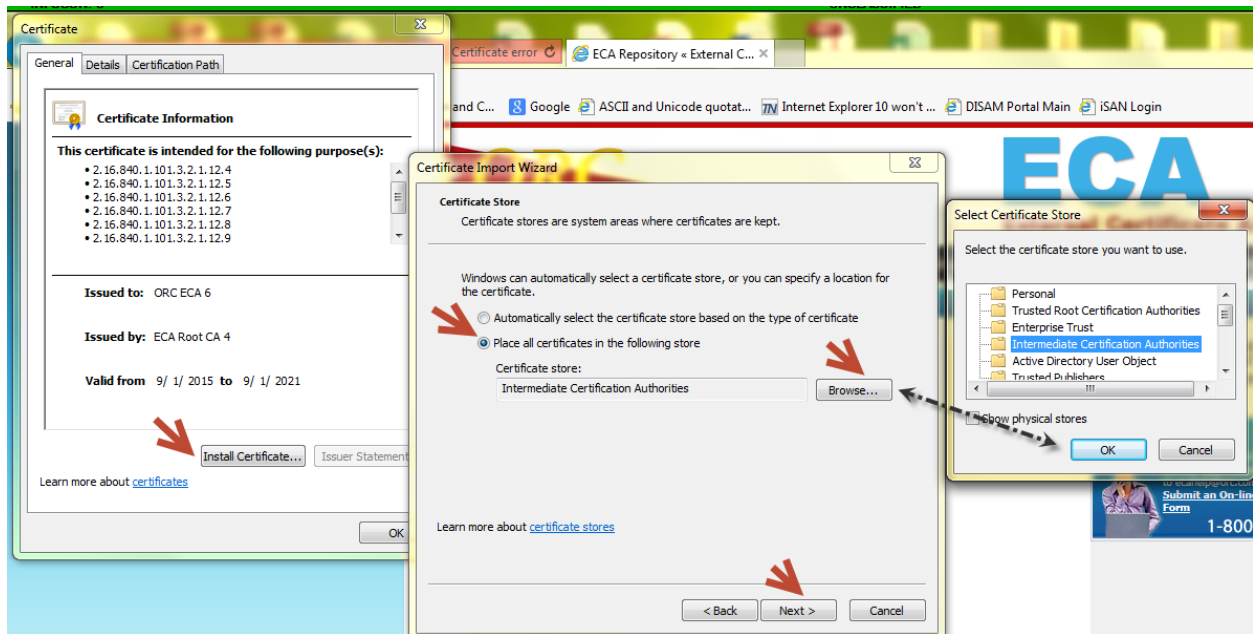


Figure 9

21. Select the **Finish** button; see Figure 10.

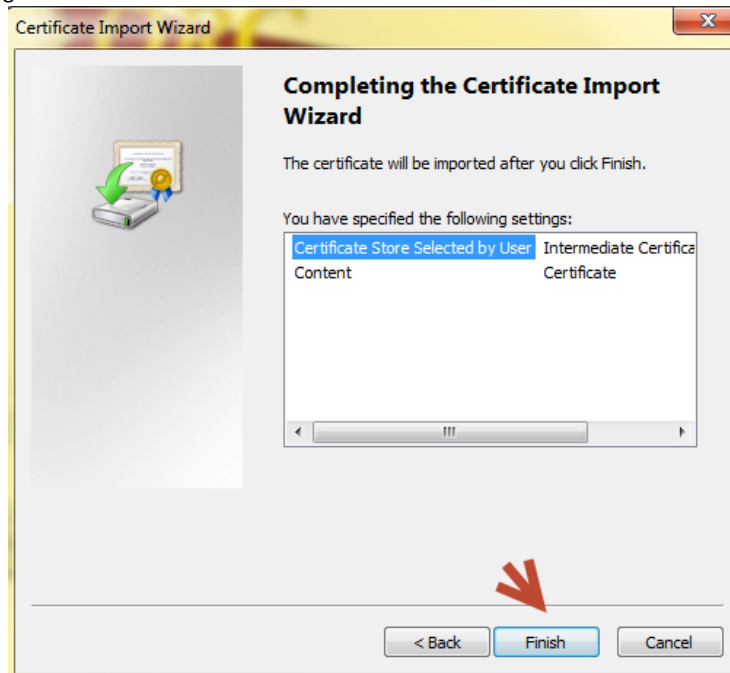


Figure 10

22. If asked "Do you want to install this certificate?", select the **Yes** button.

23. Select **OK**; see Figure 11

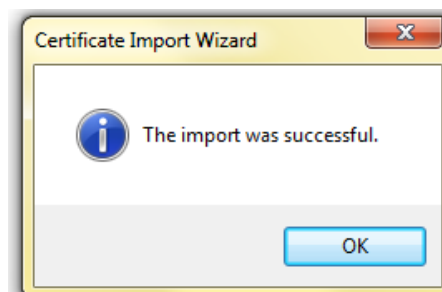


Figure 11

Check to see if the ORC ECA 6 and ECA Root CA 4 certificates were installed.

24. Check to see if the ORC ECA 6 and ECA Root CA 4 certificates were installed.

Internet Explorer; see Figure 12:

1. From the menu bar select **Tools > Internet Options**
2. **Select the Content tab**
3. Select the **Certificates** button
4. Select the **Intermediate Certification Authorities** tab
5. Scroll down and find **ORC ECA 6**
6. Select the **Trusted Root Certification Authorities** tab
7. Scroll down and find **ECA Root CA 4**

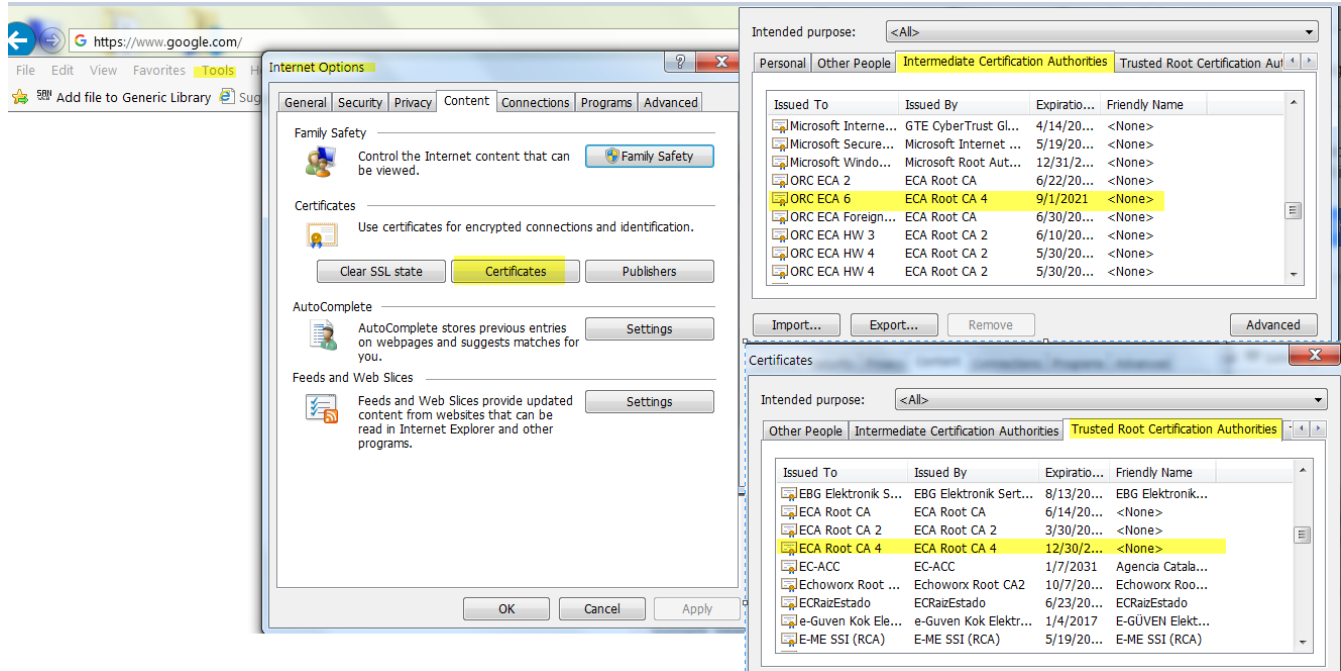


Figure 12

Google Chrome; see Figures 13 and 14:

1. Select the Chrome control options in the top, right-hand corner of the screen
2. Select **Settings**
3. Scroll down the list of settings, then select the **Show advanced settings...** link
4. Scroll down, find and select the **Manage certificates...** button
5. Select the **Intermediate Certification Authorities** tab
6. Scroll down and find **ORC ECA 6**
7. Select the **Trusted Root Certification Authorities** tab
8. Scroll down and find **ECA Root CA 4**

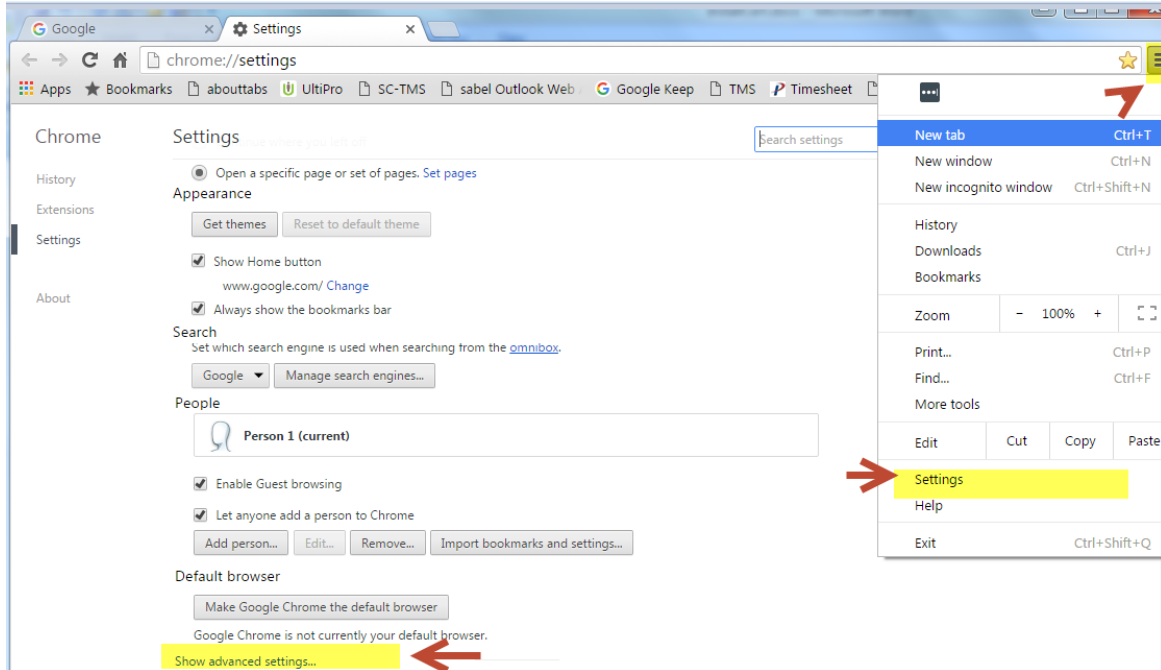


Figure 12

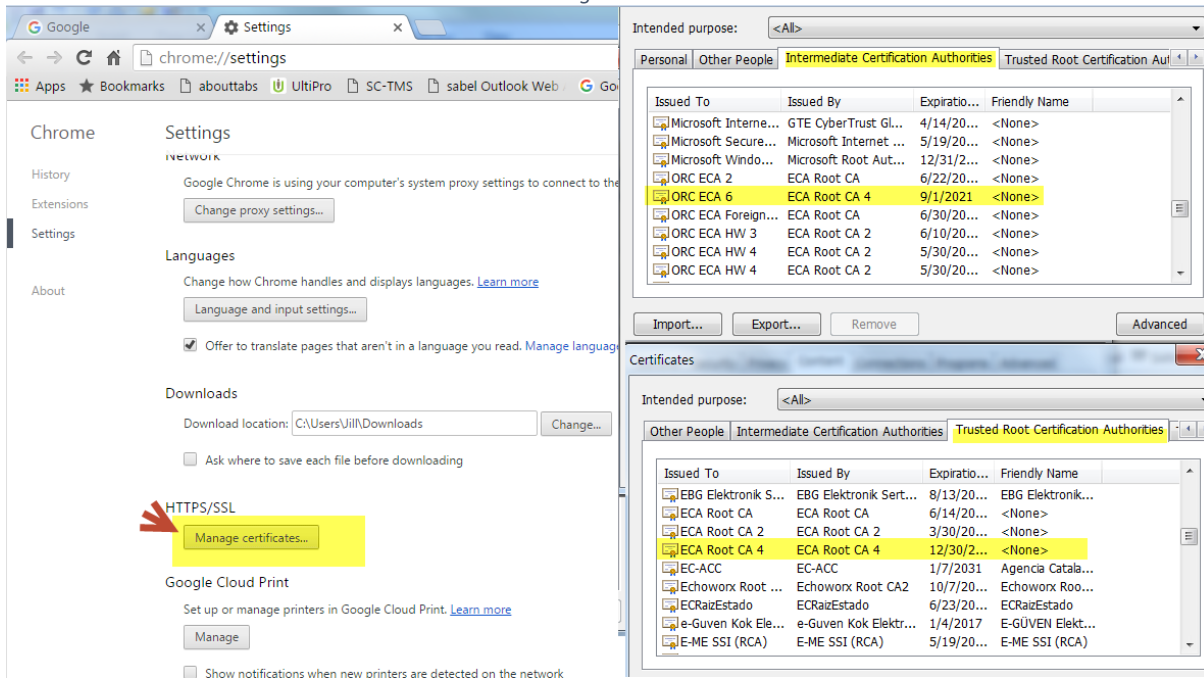


Figure 13